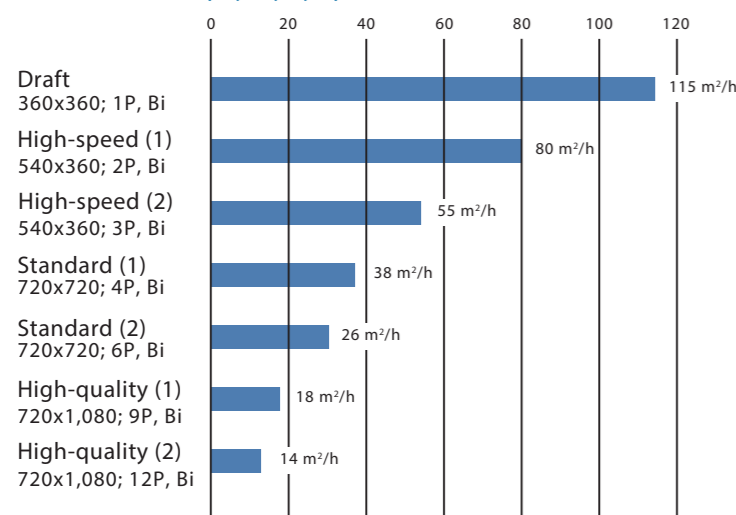


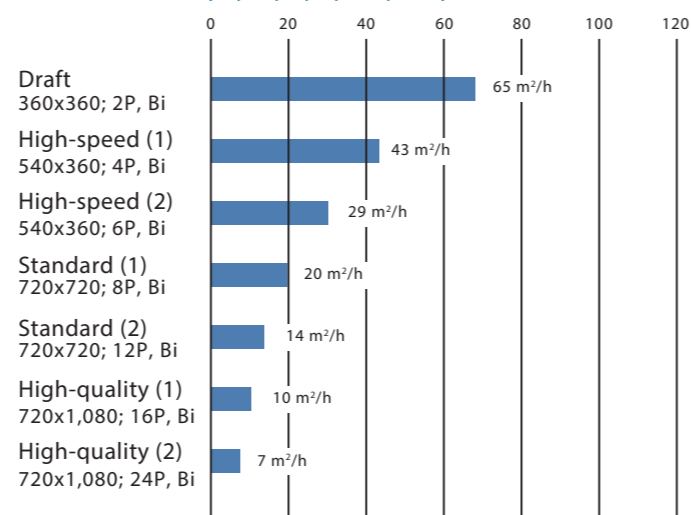
## Maximum print speed (115 m<sup>2</sup>/h) achieves high productivity

The TS300P-1800 optimizes the printing speed and quality to produce the desired print results. For this purpose, it provides a wide range of printing modes, from the draft printing mode (which operates at the maximum speed of 115 m<sup>2</sup>/h) to high-quality printing mode.

### 4 color ink set (BI, M, Y, K)



### 6 color ink set (BI, M, Y, K, LBI, Lm)



## Software

TxLink3 Lite or RasterLink6 is bundled according to user's request.

Professional software RIP for multi color separation  
**Software RIP for Multi Color Separation**  
**TxLink3**

- Spot color can be assigned to each color on separation plates.
- ICC profile creation from CMYK + spot colors.
- Color replacement on raster data.
- A variety of paneling functions, including step-and-repeat layout, which are useful for textile designing.

User friendly RIP "RasterLink 6"  
**RasterLink6**

- More beautiful and advanced print results are achieved by following a user-friendly interface that is easy to operate.
- Color replacement function enhances the ability to re-create printed images.

<Supports Web update function>  
 Program update and profile download can be easily performed via internet.

## Specifications

Item	TS300P-1800
Printhead	On-demand piezo head (4 in-line printheads)
Print resolution	360 dpi, 540 dpi, 720 dpi, 1,080 dpi
Maximum print width	1,940 mm (76.4 in)
Maximum media width	1,950 mm (76.8 in)
Ink	Type/Color
	Package size
Media thickness	1.0 mm or less
Rolled media weight	40 kg (88 lb) or less
Certifications	VCCI class A, FCC class A, ETL UL 60950-1 CE Marking (EMC, Low voltage, Machinery directive, and RoHS), CB, REACH, Energy Star, RCM
Interface	USB 2.0 Hi-speed / Ethernet 1000BASE-T
Power supply	Single-phase (AC 100 - 120 V / AC 200 - 240 V)
Power consumption	AC 100 V : 1.44 kW / AC 200 V : 1.92 kW
Operational environment	Temperature: 20 - 30 °C (68 - 86 °F) Humidity: 35 - 65% Rh (Non condensing)
Dimensions (WxDxH)	3,200 x 850 x 1,857 mm (126 x 33.5 x 73.1 in)
Weight	213 kg (469.6 lb)

## Supplies

Item	Code		Description
	Sb411 Series		
Sublimation transfer ink Sb411	Blue	Sb411-BLT-2L	Sb411/Sb410 Series "ECO PASSPORT" Certification Ink
	Magenta	Sb411-MT-2L	
	Yellow	Sb411-YT-2L	
	Black	Sb411-KT-2L	
	Light blue	Sb411-LBT-2L	
	Light magenta	Sb411-LMT-2L	
Sb410	Light black	Sb411-LKT-2L	Sb410-FPT-2L Sb410-FYT-2L
	Fluorescent pink	Sb410-FPT-2L	
Washing liquid cartridge	C-FL003-Z-22	Washing liquid for head cleaning (220 ml)	
Washing liquid 2L pack	C-FL003-Z-2L	Washing liquid for ink replacement	

●Some of sample images in this brochure are simulated. ●Specifications, designs and dimensions stated in this brochure may be subject to change without notice (for technical improvements, etc).  
 ●All product and company names in this brochure are trademarks or registered of the respective companies. ●The printhead ejects extremely fine dots for printing, and therefore printed colors may vary after replacing the printheads. ●When using multiple printer units, printed colors would be different slightly because there is a slight difference among those units. ●Depending on image files used for printing, the print quality would be affected when printing in a low-resolution mode with the lowest number of passes. ●The specifications described in this catalog are as of August 2019.

**Sitotehnika**  
 Jugoslovenska 2, 11250 Beograd  
 Tel: +381 11 6581274, 6581275  
 www.sitotehnika.rs  
 office@sitotehnika.rs

**ST Graf**  
 Aerodromska 17, 71000 Sarajevo, tel: +387 33 719095, 66 002600, e-mail: sasastgraf@gmail.com  
 Pilanska bb, 78000 Banja Luka, tel: +387 51 305280, 66 002400, e-mail: stgrafbl@gmail.com  
 Lagja Kalabria pn, 10000 Priština, tel: +383 38 602080, 45 600641, e-mail: info@stgraf-ks.com  
 Gorno Lisiče 210, 1000 Skoplje, tel: +389 2 3245777, 78 279756, e-mail: office@stgraf.mk

Pratite nas:

For  
**TEXTILES &  
 APPAREL**

Sublimation transfer printer

# TS300P-1800

**Mimaki**<sup>TM</sup>



NEXT GENERATION



A high-quality, high-production printer is no longer a special product. Mimaki adds a new value to the next-generation printer "TS300P-1800". Developed for the textile print industry, the TS300P-1800 delivers cost-effective printing while maintaining high quality and productivity.

# NEXT GENERATION



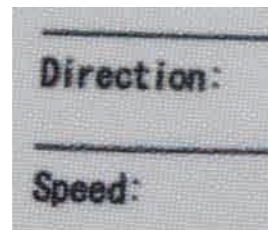
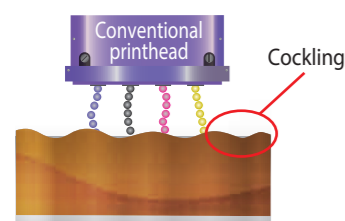
## Cost-effective solutions

The new high-gap printhead achieves high-quality printing on cockled transfer papers.

Low-cost thin transfer papers are liable to cockling\*, which affects the quality of the printhead. To prevent the contact between the printhead and raised surface, a high head gap setting is required. In conventional models, such gap conditions reduce the accuracy of the ink droplet placement. The new TS300P-1800 employs a new printhead that ejects droplets at high speed to ensure accurate ink droplet placement with a high head gap, thereby enabling high-quality printing on thin papers.

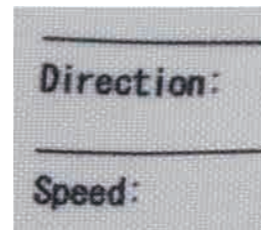
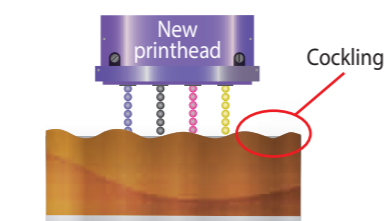
\* Cockling: Wrinkling of the media surface because of ink absorption.

■ Conventional printhead



Inaccurate placement of the ink droplets leads to blurring in the printed text.

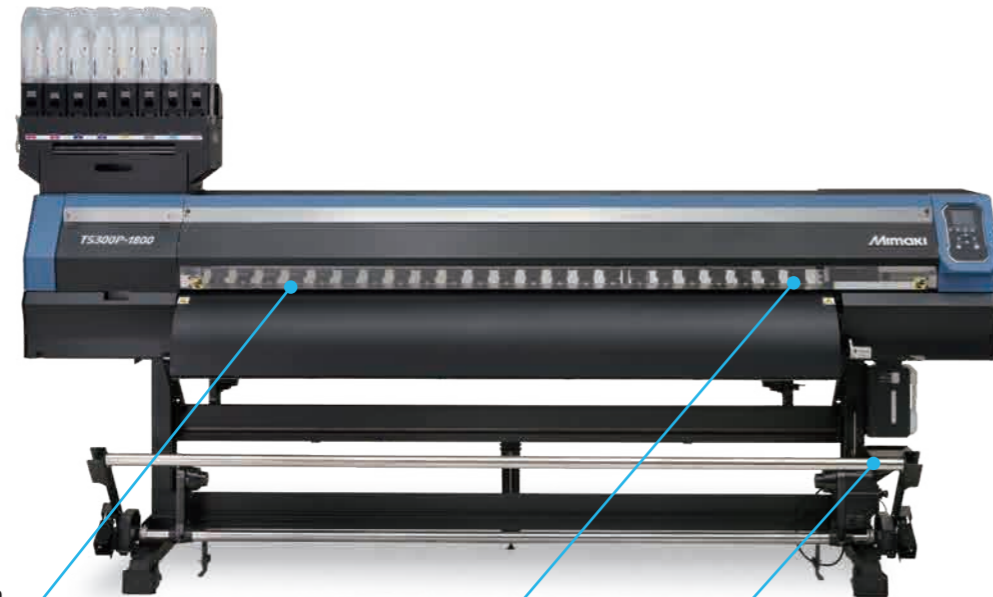
■ New printhead



Accurate placement of the ink droplets produces sharp, clear text.

## Cockling-reduction transfer mechanism

The cockling-reduction transfer mechanism enables high-quality printing on a wide range of transfer papers, from the low-cost thin papers to thick papers. This high media compatibility reduces the operating cost of the TS300P-1800 without losing the print quality.



**Vacuum media hold-down system beneath the platen**

The media attach to the platen by vacuum suction. Under suction, the cockled media surfaces are smoothed out.

**Larger media press plates**

Enlarged plates moderate cockling by reducing media uplift and hold down the media immediately after printing.

**Auto Media Feeder (AMF)**

The AMF automatically applies the right tension to the media, thereby maintaining stable media feeding and take-up.



## High-performance, low-cost sublimation transfer ink Sb411 Series

**Affordable ink price reduces production cost**

The Sb411 Series ink costs 20% less than the conventional ink "Sb53".

This competitive price improves the performance of businesses.

**Beautiful and vibrant print results**

This low-sedimentation ink achieves stable and beautiful printing. Moreover, heat-press transfer printing yields vibrant colors by virtue of the high-density printing.

**Stable ink flow and jetting**

The Sb411 Series ink has superior re-solubility properties. Therefore, dried inks adhered around nozzles are easily wiped off with cleaning solutions. The improved resolvability also ensures more stable ink jetting, thereby improving the print production yield. Moreover, because the ink stability is improved, fewer regular cleanings are required, further contributing to cost reduction.

**Low smoke emission**

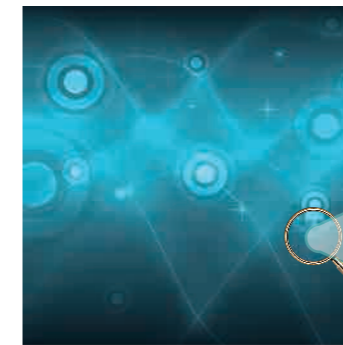
The Sb411 Series ink emits little smoke, thereby improving the work environment and increasing the work efficiency during heat-press transfer printing.

## Mimaki's print technologies

**Mimaki Advanced Pass System 4 (MAPS4) reduces banding**

Mimaki's unique anti-banding technique MAPS4\* is an advanced version of MAPS3. To prevent banding, swath boundaries are overprinted, whereas boundaries prone to banding are printed with fewer ink droplets.

\* MAPS4: Mimaki Advanced Pass System 4



MAPS ON



MAPS OFF

**Superior inkjet technology**

Mimaki's superior inkjet technology accurately places the ink droplets without losing their perfect circularity. This ensures that texts, lines, and edges are clearly and sharply printed.



Waveform control applied

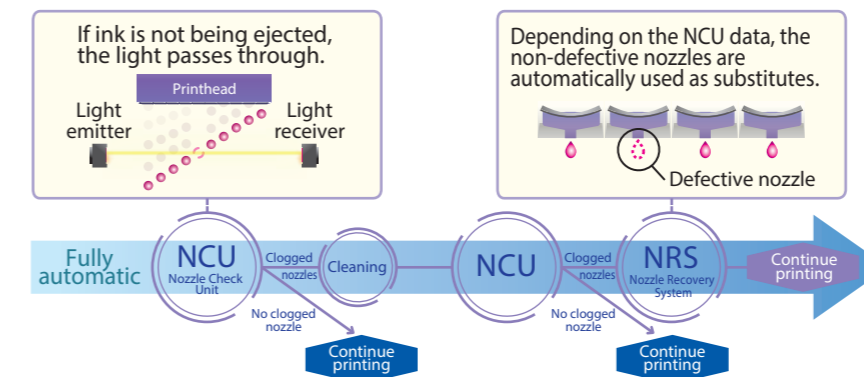


No waveform control

## Uninterrupted printing solutions

**Continuous operation support pack minimizes the downtime**

The Nozzle Check Unit (NCU) detects nonfunctioning nozzles and automatically cleans them. If the nozzles fail to operate after cleaning, defective nozzles are replaced by non-defective ones until a technician arrives, and printing is continued. This feature enables uninterrupted print operations and continuous productivity.



**Mimaki Bulk Ink System 3 (MBIS3) for long-time continuous printing**

Large ink packs (2 liters) can be installed in the MBIS3. The standard "MBIS3" enables long-time continuous printing at reduced operating cost.

