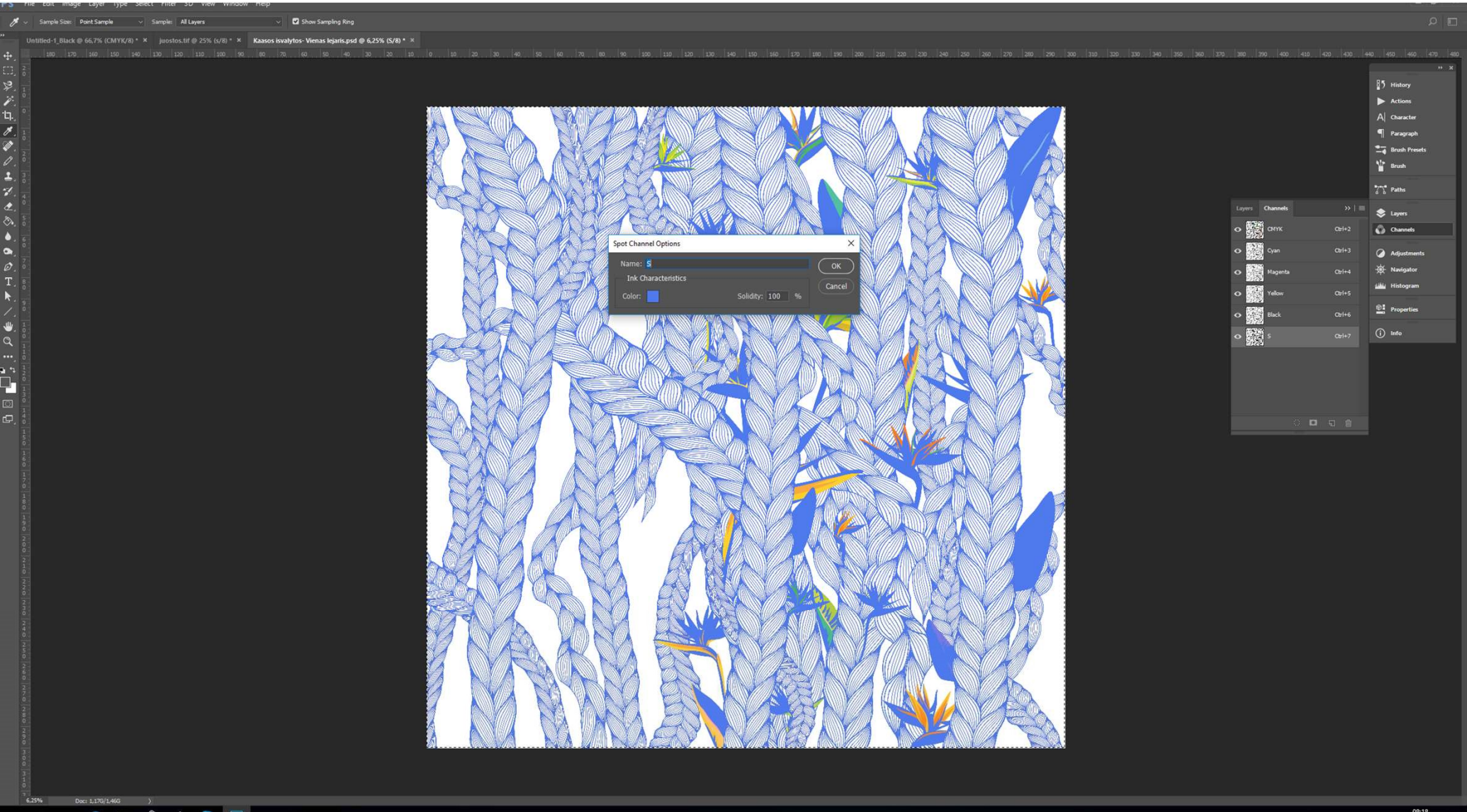


Caldera

Caldera

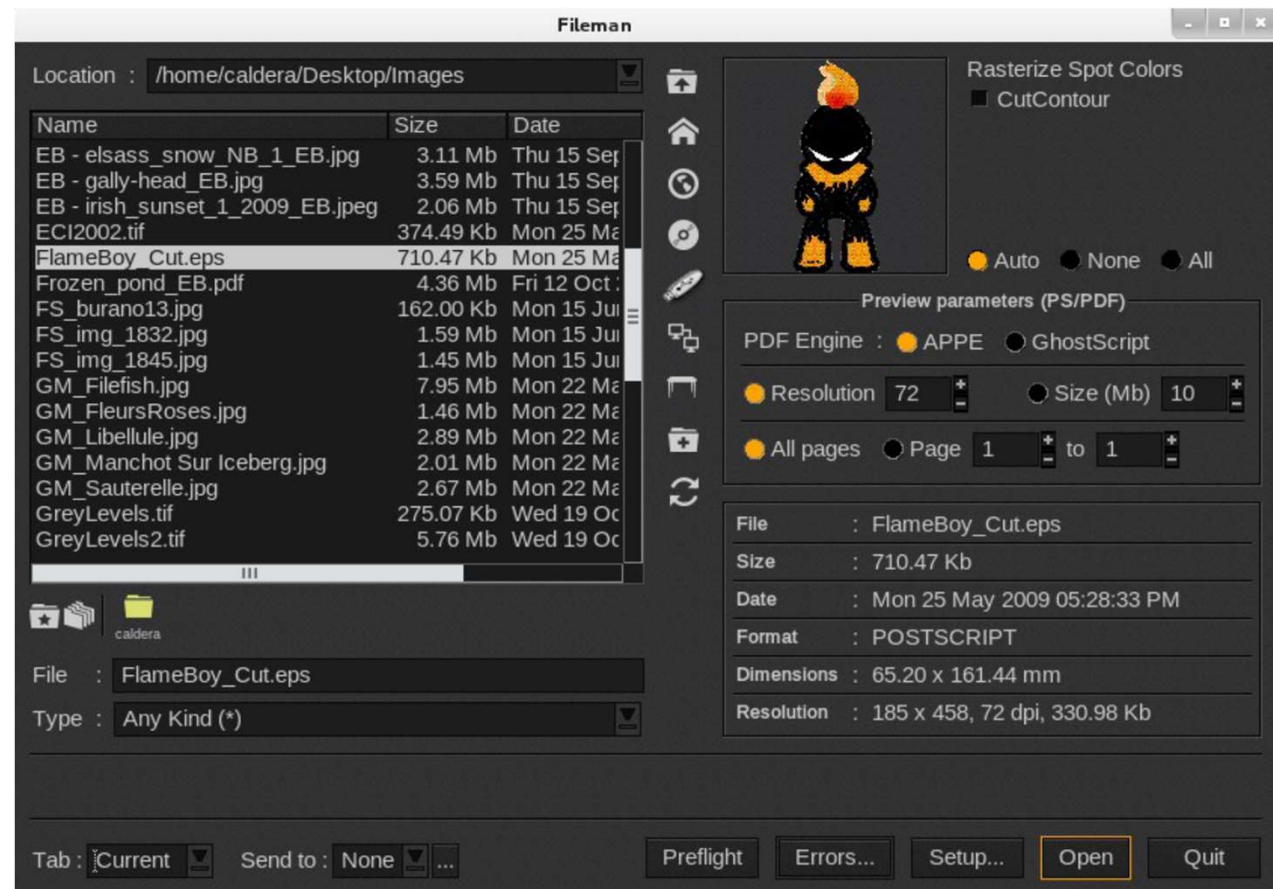
- Dimensor S comes with a widely used Caldera RIP
 - A powerful RIP solution for printers of all sizes using digital ink-jet.
 - Running on Linux or IOS operating systems.

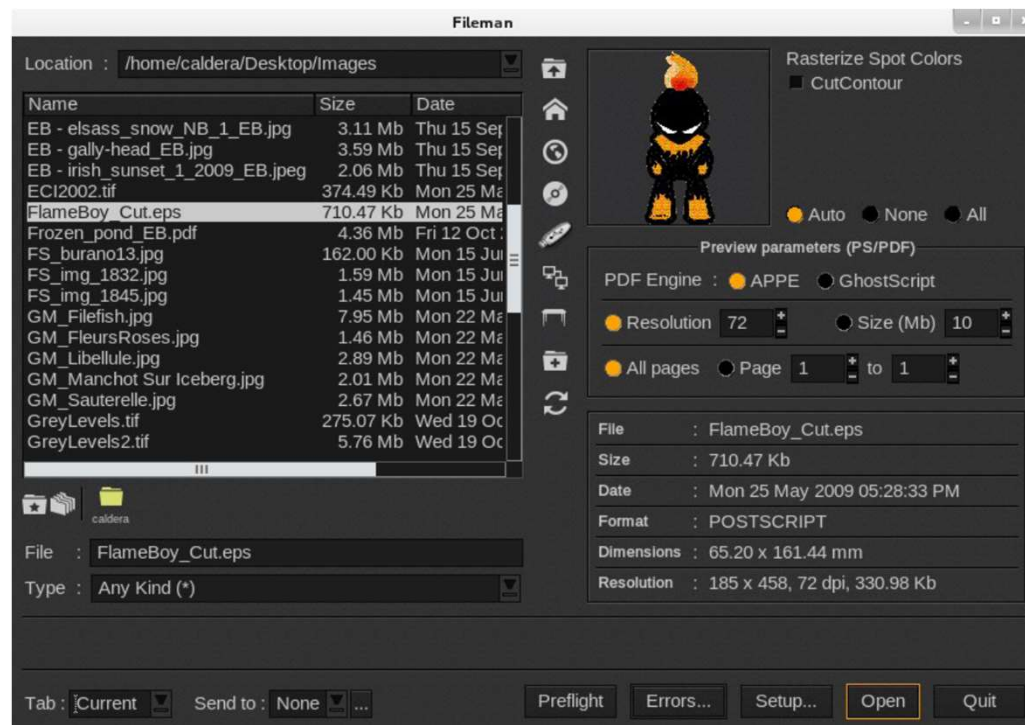
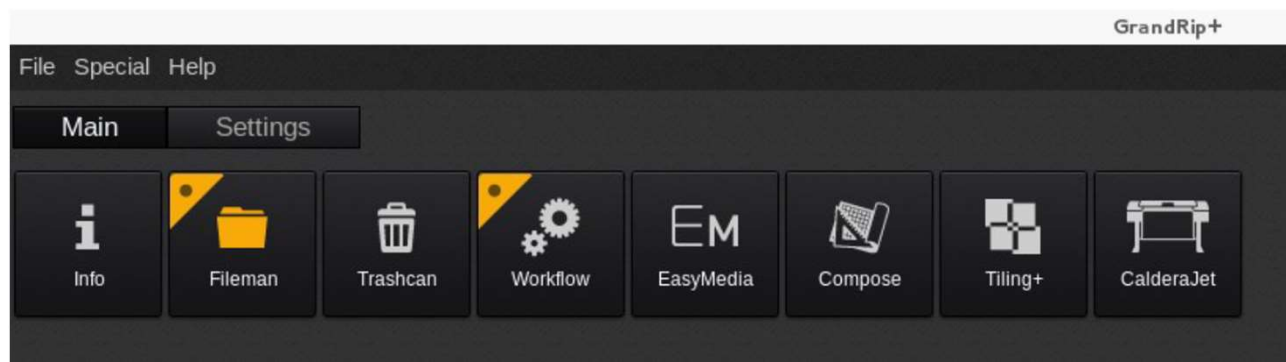


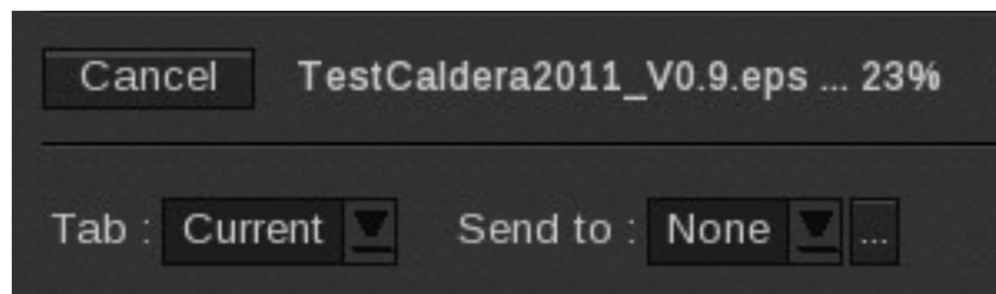


FileMan module

The FileMan module is used to send your jobs to the image module.







ImageBar

ImageBar module is the place where you store all your jobs. You can:

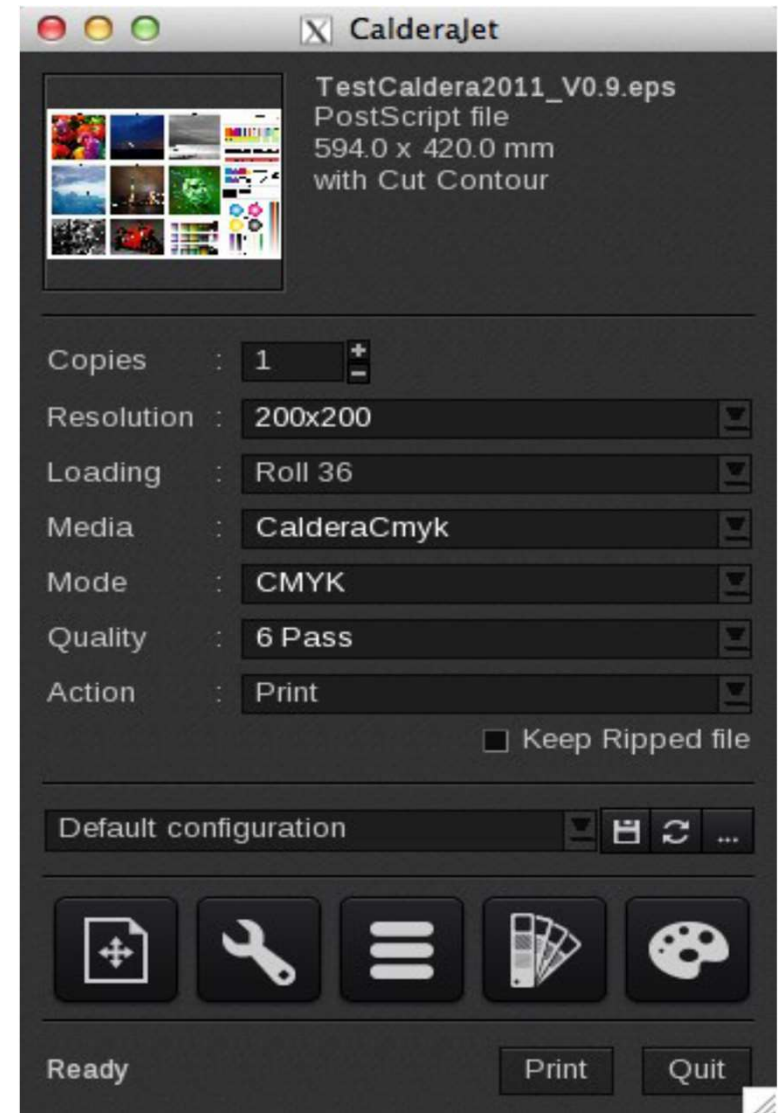
- Create different folders for your jobs,
- Select it as done,
- Filter,
- Crop them in the preview mode.



Print Module

Print module is used to set the main parameters of the job that you are going to print:

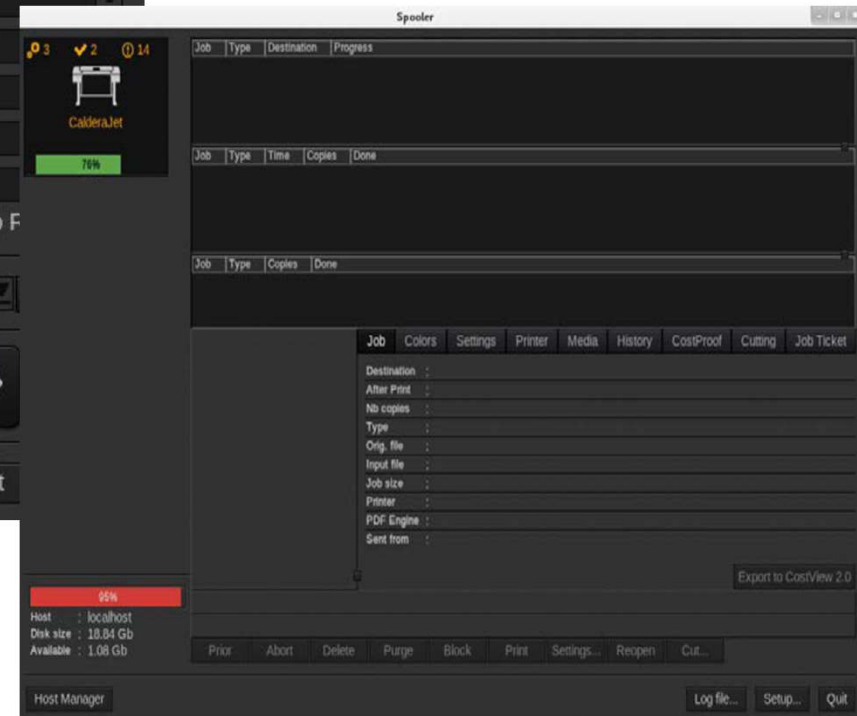
1. Copies – select the number of copies for your job.
2. Resolution – that depends on your created profile.
3. Loading – media width.
4. Media – profile name that you are using.
5. Mode – ink type system. (CMYK, CMYK + light inks, CMYK + additional colors)
6. Quality – the number of passes you are going to use to print your image.
7. Action – select what Caldera will do with your job after you push the print button (print, rip, rip then print, nest)



Spooler

Spooler is usually used as production monitoring. In this module you can:

- See your running jobs,
- See completed or aborted jobs,
- Manage jobs.



Spooler

0 1 0



CalderaJet

Idle

Job Type Destination Progress

Job	Type	Time	Copies	Done	Cutting
EB_chopin_NB-0103.jpg	Ripped file	00:00:11	1	1	Yes

Job Type Copies Done

Caldera-City-Strasbourg_
Copyright.pdf



Job Colors Settings Printer Media History **CostProof** Cutting Job Ticket

	Usage	Cost	Ink+Media
Red	2.59 ml	0.26 \$	
Green	6.06 ml	0.61 \$	
Blue	5.17 ml	0.52 \$	
	3.91 ml	0.39 \$	
Total	17.74 ml	1.77 \$	
Media	1.25 m2	0.25 \$	2.02 \$

DolCC, 5.00 \$/m2

Configure...

Finished

83%

Host : localhost
Disk size : 18.84 Gb
Available : 3.31 Gb

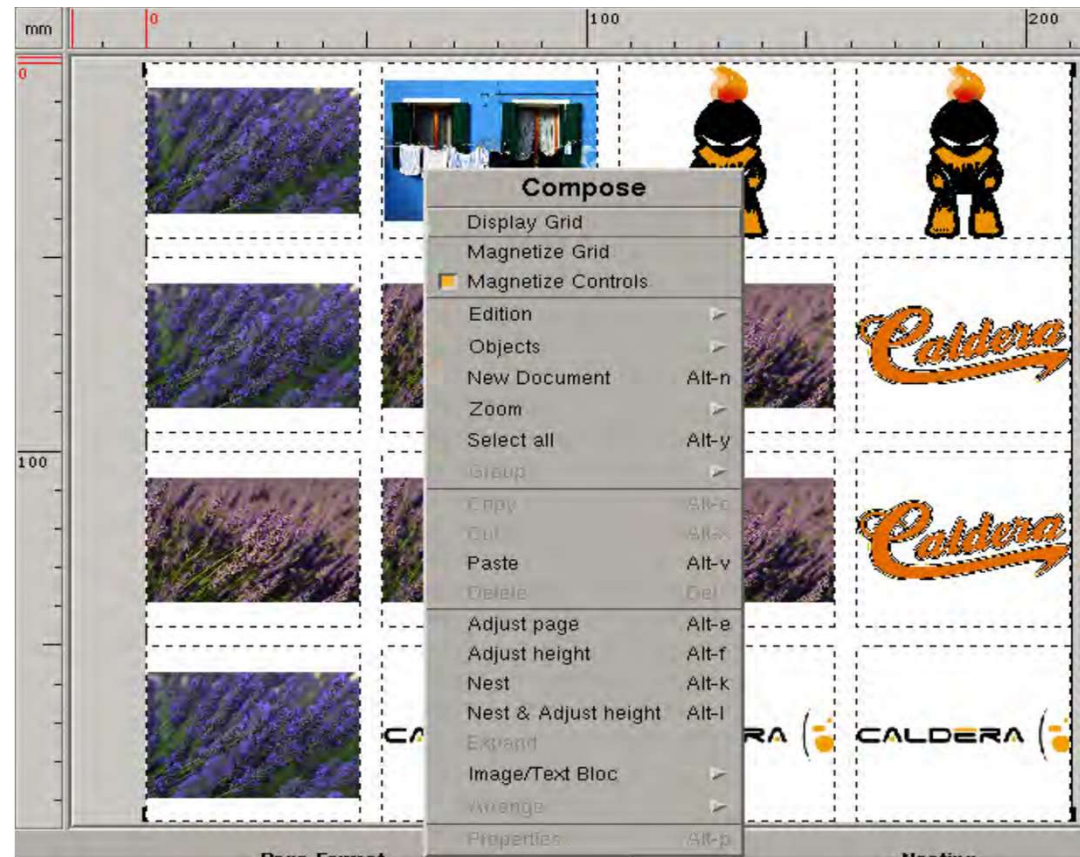
Host Manager

Prior Abort Delete Purge Block Print Settings... Reopen Cut...

Log file... Setup... Quit

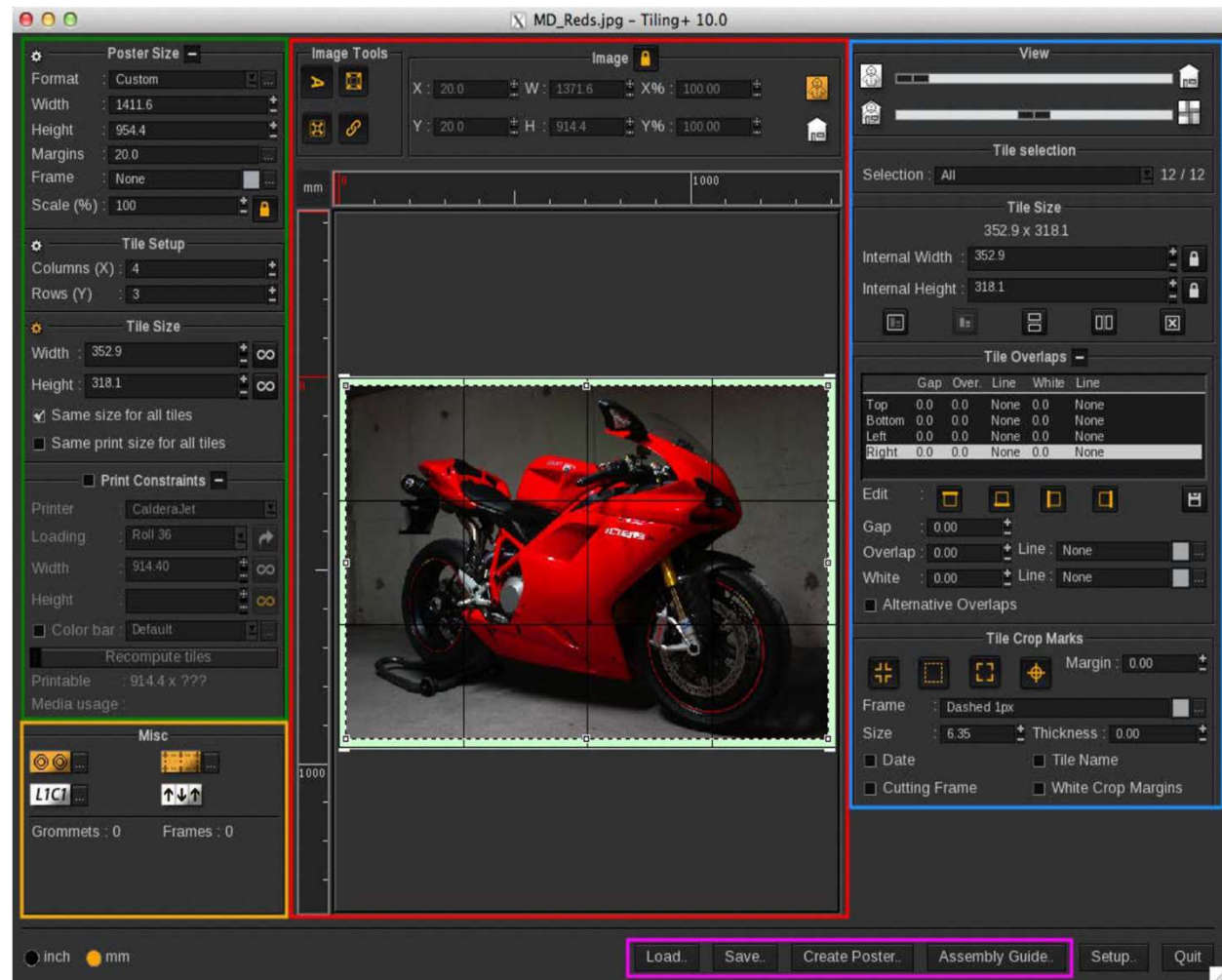
Compose

- Allows you to nest your files on the same document.
- Especially useful when it comes to page layout, including the possibility of placing several images on a same page, through the use of blocks and templates.



Tiling

Tiling can be used in many diverse cases such as printing posters meant to be pasted on 4x3 meters advertisement panels, preparing pictures to be put on panels for a stand (in the case of an exhibition) and many more.



EasyMedia

EasyMedia module comes with the default Caldera RIP for Dimensor S.

With EasyMedia module you can calibrate your display and create your own ICC profiles.

