



# SUMMA F SERIES

Professional flatbed  
finishing systems



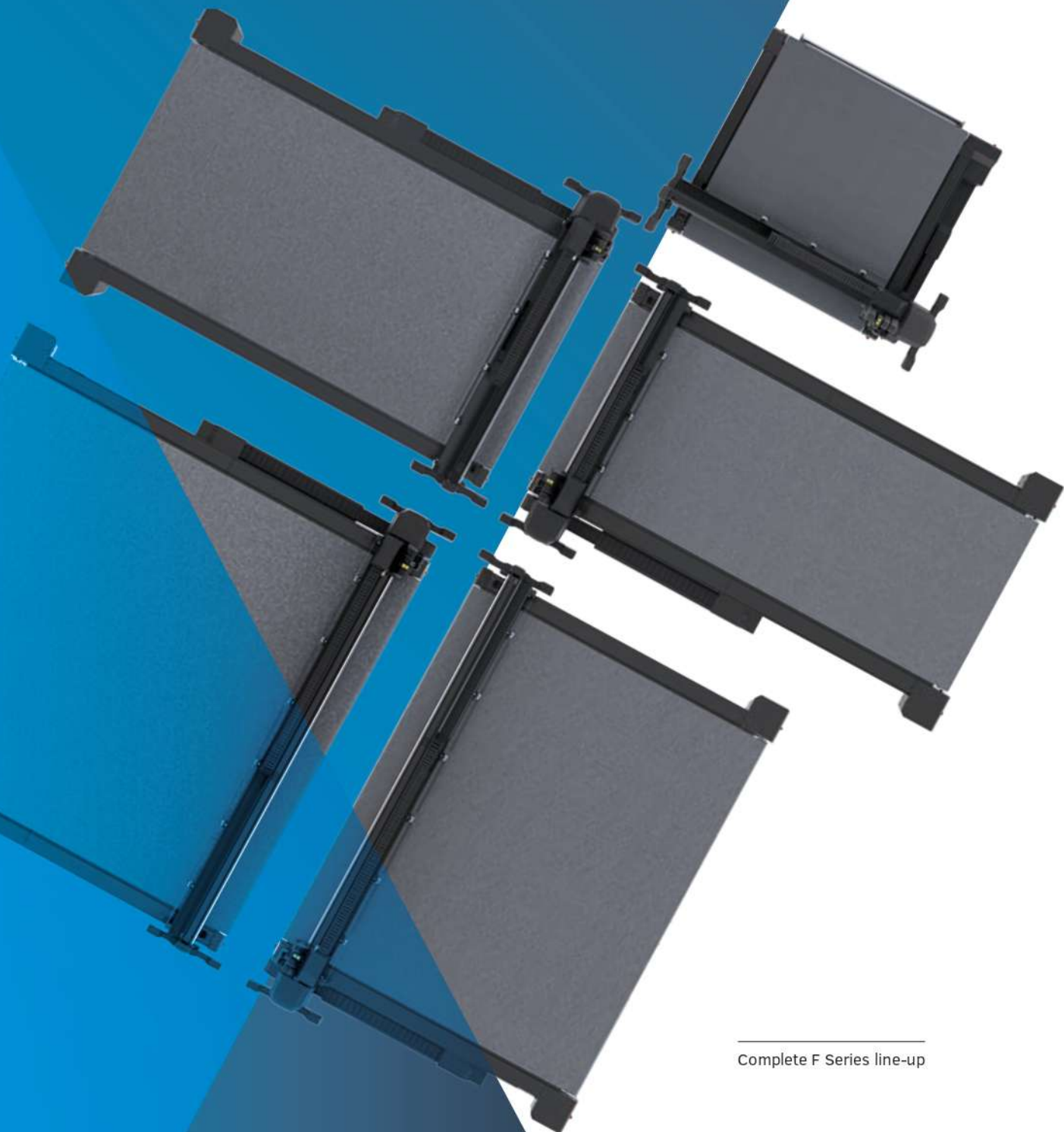
Summa.com | #SummaFinish

# SUMMA F SERIES, BUILT TO GROW WITH YOUR BUSINESS

---

With the F Series, Summa offers a future-proof cutting product line based on over 30 years of expertise in building the world's very best cutting plotters. These advanced engineered flatbed cutting tables are designed to cut various sheet and rigid materials as well as roll stock. A multi-functional cutting head, a great range of modules and tools and many media handling options contribute to the series' versatility and flexibility.

Over the years, the Summa F Series opened many doors for our customers, enabling them to expand business into new markets such as packaging design, Point Of Sale and textile applications.



---

Complete F Series line-up



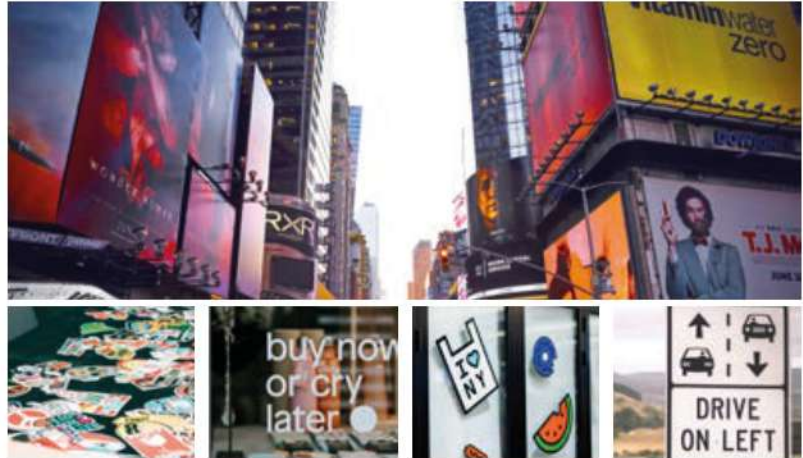
## Applications

The F Series is designed to process a wide variety of materials for an even greater diversity of applications. Achieve a perfect cut with the Summa flatbed cutters to realise flawlessly finished end products.

### S Sign & Display

The world of Sign and Display is broad and versatile. The flatbed cutting solutions can optimise your print & cut workflow, meet your customers' deadlines and deliver perfectly finished end-products.

- POS displays
- Soft signage
- Stickers
- Mock-up designs
- Traffic Signs
- Billboards



### T Textile

When processing textiles, a most accurate cut is of key importance. With a great diversity in production processes, textile cutting is still often done manually. The flatbed cutters enable businesses to optimise their workflow, make it more efficient and significantly reduce material waste.

- Backlit displays
- Flags & banners
- Interior decoration
- Sportswear
- Fashion



### P Packaging

In today's imaging dominated world the role of packaging is more relevant than ever. Packaging must, therefore, stand out and attract the eye of the beholder. At the same time, it is important packaging is strong enough to withstand transportation handling.

- Prototype packaging
- Customised packaging
- Short-run packaging
- Event-based packaging
- Creative packaging



# SUMMA F SERIES

The F Series is developed to meet every customer's cutting need. For this reason, the flatbed cutters from Summa include so many elements to compose your ideal cutting solution.



F3220 w/ Heavy-Duty Roll Support

## One Machine, Countless Possibilities

It starts with the base unit with a choice of no less than 5 models. Then you can carefully choose the modules and tools you need for your applications and consider the various media handling add-ons. Additionally, the included GoProduce software enables you to operate the cutter with ease and set up a productive workflow.

### 01 Base Unit

### 02 Modules & Tools

### 03 Media Handling Add-on

### 04 Software



F1612 w/ Conveyor Extension



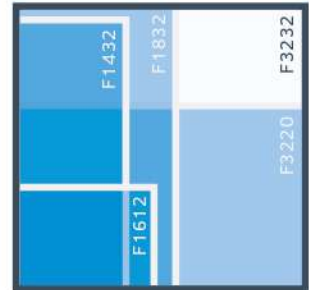
## Build your workforce

The Summa F Series include a number of very powerful elements to combine into your ideal cutting solution. What's more, the available tools are retrofittable and add-ons and media handling options can be acquired at any stage. This is exactly what makes an F Series flatbed cutter the ideal workforce to grow with your business.

### 01 | Strong Base Unit

The base unit is the foundation of a good performing cutting workflow. It has to be strong and the right size. With Summa you can choose from no less than 5 models. Also, the integrated safety system is part of the flatbed's strong foundations contributing to a safe working environment. Summa products are CSA and ISO 9001 certified to meet the highest standards for efficiency, quality improvement and high-end service.

- Flatbeds available in five sizes
- Easy maintenance of the system
- Complies with worldwide health and safety requirements
- Highly advanced technology
- Cutting table remains easily accessible
- Optimised footprint
- CSA Certified
- ISO 9001 Certified



Working area comparison

### 02 | Extensive Range of Modules & Tools

The F Series perfectly grows in line with your business goals and aspirations. Open up to new markets and applications with the modules and tools of your choice. The multifunctional head is able to hold up to three modules at once, with the tools you prefer.

- Drag knife module
- Tangential module
- High Torque Rotary module
- Standard Router module
- High-Frequency Router module
- Extensive choice of tools



Tangential Module

### 03 | Efficient Media Handling & Workflows

The flatbed cutters are equipped with convenient media handling features and multiple add-ons to choose from. Further optimise your cutting workflow thanks to the operator zone, barcode workflow and F-Performance.

- Conveyor belt system
- Roll support system
- Vacuum table
- Media advance clamps
- Operator zone
- Poster trim
- Barcode workflow
- F-Performance
- And many more
- **Exclusive F1612 Add-ons:**
- Conveyor extension
- Basket
- Roll-up system
- Extension Tables

### 04 | Powerful Software

Summa GoProduce is a powerful and in-house developed software. The cornerstone of the good functioning of your F Series. Tailor and use the software as you wish through targeted features and choose the level of advancement according to your specific cutting requirements.

- Material manager
- Custom configuration of action sets
- Barcode functionality (Pro Pack)



Summa GoProduce

# SUMMA F1612

The F1612 is Summa's smallest F Series flatbed cutter, fitting effortlessly into many production areas. It represents the ideal cutting solution for sign makers who want to automate their cutting workflow or extend their cutting applications.

## Key Benefits

- Small footprint
- Straightforward installation
- Media handling options
- Modular tooling system
- Integrated Safety System
- Future-proof

## Ideal to cut:

- Cardboard material
- Roll stock
- (Technical) textile
- Synthetic material
- Foamboard
- Wood



**Video:**  
Scan the QR  
code to watch  
all F Series  
videos

SUMMA F1612 | 9

## Technical Specifications

Model	F1612
Dimensions	247 x 220 x 110 cm
Material width	Up to 165 cm
Work zone	160 x 120 cm
Vacuum	1.3 kW (50Hz) / 1.75 kW (60Hz)
Vacuum zones	Variable on the width of the machine
Requirements	<b>Standard:</b> 3 x 400V + N, 50Hz, max 20A <b>Or:</b> 3 x 208V + N, 60Hz, max 30A <b>Or:</b> 3 x 230V, 50Hz, max 20A
Standard solution includes:	<ul style="list-style-type: none"><li>• F Series flatbed system</li><li>• Conveyor system with pneumatic media clamps and roll support</li><li>• Security Pack</li><li>• Camera system</li><li>• Axis Control software</li><li>• Drag module</li><li>• ADC left &amp; right</li><li>• GoProduce software</li><li>• Speed: up to 1000 mm/sec</li><li>• Acceleration: up to 1G</li></ul>

## Modules & Tools

All F Series models can be equipped and retrofitted with various modules and tools. This makes the F Series ideal to grow with your business and open up new markets at any given time.

- High-Frequency Router
- High Torque Rotary module
- Tangential module
- V-Cut tools, Creasing tools, Heavy-Duty Cutout tool, etc.

## Media Handling & Workflows

The flatbed cutter is standard equipped with a range of convenient media handling features. For the F 1612 model special media handling options are available to further enhance the use of this compact flatbed.

Enjoy an automated workflow and ease-of-use:

- Twin Workflow
- Operator Zone
- Poster Trim
- Barcode Workflow

## Media Handling Add-Ons

- Conveyor extension
- Roll-up system
- Extension tables
- Basket





# SUMMA F1432

The F1432 is the latest addition to the F Series flatbed cutters. It allows to process popular 137 cm/54" roll widths more efficiently and its working length gives sufficient margin to easily cut 3m/10ft jobs. For many businesses, this size is the ideal interim solution between the F1612 and F1832 models.

## Key Benefits

- Perfect interim size
- Modular tooling system
- Integrated Safety System
- Future-proof

## Ideal to cut:

- Roll stock
- Lengthy materials
- Cardboard material
- (Technical) textile
- Synthetic material

## Modules & Tools

All F Series models can be equipped and retrofitted with various modules and tools. This makes the F Series ideal to grow with your business and open up new markets at any given time.

- High Frequency Router
- High Torque Rotary module
- Tangential module
- V-Cut tools, creasing tools, Heavy-Duty Cutout tool, etc.



**Video:**  
Scan the QR code to watch all F Series videos

SUMMA F1432 | 10

## Technical Specifications

Model	F1432
Dimensions	230 x 422 x 122 cm
Material width	Up to 142 cm
Work zone	136 x 320 cm
Vacuum	2.2 kW (50Hz) / 2.55 kW (60Hz)
Vacuum zones	6 zones (2 lines x 3 columns)
Requirements	<b>Standard:</b> 3 x 400V + N, 50Hz, max 30A <b>Or:</b> 3 x 208V + N, 60Hz, max 30A <b>Or:</b> 3 x 230V, 50Hz, max 20A
Standard solution includes:	<ul style="list-style-type: none"><li>• F Series flatbed system</li><li>• Conveyor system with pneumatic media clamps and roll support</li><li>• Security Pack</li><li>• Camera system</li><li>• Axis Control software</li><li>• Drag module</li><li>• ADC left &amp; right</li><li>• GoProduce software</li><li>• Speed: up to 1000 mm/sec</li><li>• Acceleration: up to 1G</li></ul>

## Media Handling & Workflows

The flatbed cutter is standard equipped with a range of convenient media handling features. Enjoy an automated workflow and ease-of-use:

- Twin Workflow
- Operator Zone
- Poster Trim
- Barcode Workflow
- Tandem Mode



# SUMMA F1832

The F1832 F Series flatbed cutter is a perfect match for cutting popular materials, such as 150 cm wide rolls and 152 x 304 cm rigid board materials. Combined with the High Torque rotary tool, the F1832 is ready to conquer also the textile market with the ability to cut the popular textile size of 183 cm.

## Key Benefits

- Processes popular board and roll material
- Modular tooling system
- Integrated Safety System
- Future-proof

## Ideal to cut:

- Cardboard material
- Roll stock
- (Technical) textile
- Synthetic material
- Foamboard
- Wood

## Modules & Tools

All F Series models can be equipped and retrofitted with various modules and tools. This makes the F Series ideal to grow with your business and open up new markets at any given time.

- High Frequency Router
- High Torque Rotary module
- Tangential module
- V-Cut tools, creasing tools, Heavy-Duty Cutout tool, etc.



**Video:**  
Scan the QR code to watch all F Series videos

SUMMA F1832 | II

## Technical Specifications

Model	F1832
Dimensions	279 x 422 x 122 cm
Material width	Up to 190 cm
Work zone	184 x 320 cm
Vacuum	2 x 2.2 kW (50Hz) / 2 x 2.55 kW (60Hz)
Vacuum zones	8 zones (2 lines x 4 columns)
Requirements	<b>Standard:</b> 3 x 400V + N, 50Hz, max 30A <b>Or:</b> 3 x 208V + N, 60Hz, max 30A <b>Or:</b> 3 x 230V, 50Hz, max 20A
Standard solution includes:	<ul style="list-style-type: none"><li>• F Series flatbed system</li><li>• Conveyor system with pneumatic media clamps and roll support</li><li>• Security Pack</li><li>• Camera system</li><li>• Axis Control software</li><li>• Drag module</li><li>• ADC left &amp; right</li><li>• GoProduce software</li><li>• Speed: up to 1000 mm/sec</li><li>• Acceleration: up to 1G</li></ul>

## Media Handling & Workflows

The flatbed cutter is standard equipped with a range of convenient media handling features. Enjoy an automated workflow and ease-of-use:

- Twin Workflow
- Operator Zone
- Poster Trim
- Barcode Workflow
- Tandem Mode

## Media Handling Add-on Available:

- Heavy-Duty Roll Support





# SUMMA F3220

The F3220 F Series flatbed cutter has a working width of 3.2 m. It is the ideal companion to process wide-format materials with utmost ease and accuracy. Thanks to the size users are able to obtain a print & cut workflow fitting seamlessly into each other, opening up to endless applications for the textile market in particular.

## Key Benefits

- Matches 3.2 m wide textile printers
- Ideal for high-production environments
- HD RS for heavy roll material
- Modular tooling system
- Integrated Safety System
- Future-proof

## Ideal to cut:

- Textile (flags, mesh, banners)
- 3 m x 2 m board material



**Video:**  
Scan the QR code to watch all F Series videos

## Technical Specifications

Model	F3220
Dimensions	422 x 313 x 122 cm
Material width	Up to 332 cm
Work zone	327 x 210 cm
Vacuum	4 kW (50Hz) / 4.6 kW (60Hz)
Vacuum zones	7 zones (1 lines x 7 columns)
Requirements	<b>Standard:</b> 3 x 400V + N, 50Hz, max 20A <b>Or:</b> 3 x 208V + N, 60Hz, max 30A <b>Or:</b> 3 x 230V, 50Hz, max 20A
Standard solution includes:	<ul style="list-style-type: none"><li>• F Series flatbed system</li><li>• Conveyor system with pneumatic media clamps and roll support</li><li>• Security Pack</li><li>• Camera system</li><li>• Axis Control software</li><li>• Drag module</li><li>• ADC left &amp; right</li><li>• GoProduce software</li><li>• Speed: up to 1000 mm/sec</li><li>• Acceleration: up to 1G</li></ul>

## Modules & Tools

All F Series models can be equipped and retrofitted with various modules and tools. This makes the F Series ideal to grow with your business and open up new markets at any given time.

- High Frequency Router
- High Torque Rotary module
- Tangential module
- V-Cut tools, creasing tools, Heavy-Duty Cutout tool, etc.

## Media Handling & Workflows

The flatbed cutter is standard equipped with a range of convenient media handling features. Enjoy an automated workflow and ease-of-use:

- Twin Workflow
- Operator Zone
- Poster Trim
- Barcode Workflow

## Media Handling Add-On Available:

- Heavy-Duty Roll Support



# SUMMA F3232

The F3232 is Summa's large-format F Series flatbed cutter, the ideal companion to process popular print sizes with utmost ease and accuracy. The large working area enables a print & cut workflow fitting seamlessly into each other, opening up to endless applications for sign&display and textile market.

## Key Benefits

- Matches 3.2 m wide textile printers
- Ideal for high-production environments
- HD RS for heavy roll material
- Modular tooling system
- Integrated Safety System
- Future-proof

## Ideal to cut:

- Textile (flags, mesh, banners)
- 3 m x 2 m board material

## Modules & Tools

All F Series models can be equipped and retrofitted with various modules and tools. This makes the F Series ideal to grow with your business and open up new markets at any given time.

- High Frequency Router
- High Torque Rotary module
- Tangential module
- V-Cut tools, creasing tools, Heavy-Duty Cutout tool, etc.



**Video:**  
Scan the QR code to watch all F Series videos

SUMMA F3232 | 13

## Technical Specifications

Model	F3232
Dimensions	422 x 422 x 122 cm
Material width	Up to 332 cm
Work zone	327 x 320 cm
Vacuum	2 x 2.2 kW (50Hz) / 2 x 2.55 kW (60Hz)
Vacuum zones	14 zones (2 lines x 7 columns)
Requirements	<b>Standard:</b> 3 x 400V + N, 50Hz, max 20A <b>Or:</b> 3 x 208V + N, 60Hz, max 30A <b>Or:</b> 3 x 230V, 50Hz, max 20A
Standard solution includes:	<ul style="list-style-type: none"><li>• F Series flatbed system</li><li>• Conveyor system with pneumatic media clamps and roll support</li><li>• Security Pack</li><li>• Camera system</li><li>• Axis Control software</li><li>• Drag module</li><li>• ADC left &amp; right</li><li>• GoProduce software</li><li>• Speed: up to 1000 mm/sec</li><li>• Acceleration: up to 1G</li></ul>

## Media Handling & Workflows

The flatbed cutter is standard equipped with a range of convenient media handling features. Enjoy an automated workflow and ease-of-use:

- Twin Workflow
- Operator Zone
- Tandem Mode
- Poster Trim
- Barcode Workflow

## Media Handling Add-On Available:

- Heavy-Duty Roll Support





# MODULES & TOOLS

The F Series models are equipped with a **multi-functional cutting head** that is able to hold up to three cutting modules at once. The system is therefore able to efficiently process cutting jobs including multiple cutting techniques. Or to quickly switch between jobs in which different materials are used. The LED pointer in the central unit and integrated camera system enable fast and accurate mark recognition.

**SLOT 1**  
Drag module

**SLOT 2**  
Tangential module

**SLOT 3**  
Tangential module



## Extensive range of Modules & Tools

Summa offers an extensive range of modules and tools to choose from. Choose what cutting modules you need based on the products you produce or will produce in the future. Start with the basics or discover the more advanced options with the Tangential cutting module.

### Tangential Module for:

- Adhesive vinyl
- Window film
- Magnetic material
- Reflective sheeting
- Foamboard with paper
- Adhesive PVC banner vinyl
- Cardboard
- Polypropylene
- Polycarbonate
- Sandblast material

Tangential Module

### Router Module for:

- Corrugated PP board
- Expanded PVC board
- Polycarbonate
- ACP/ACM
- MDF
- Foamcore with HIPS liner
- Plexi

Router Module

### Rotary Module for:

- Uncoated woven polyester
- Coated woven polyester
- Packaging foam
- Synthetic textiles
- Technical textiles

### Drag Module for:

- Paper
- Adhesive vinyl
- Adhesive PVC Banner Vinyl

High Frequency Rotary Module

### Knives, Blades & Bits

Each of the above modules can house different tools, blades and bits. Choose the tool you need to cut your specific material and obtain the best cutting quality. All tools include a barcode ID, ensuring automatic recognition and parameter pre-sets.

You can extend your tool gamut whenever you see fit as your company grows.

## Automated Depth Control / ADC

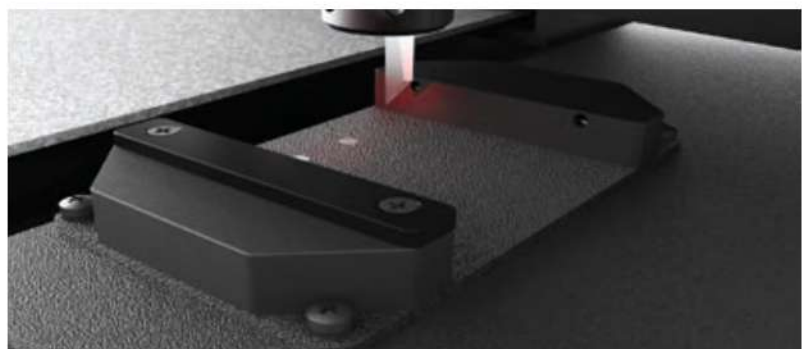
The Automated Depth Control (ADC) simplifies tool, knife or bit changes significantly. The ADC measures the tip of the knife or bit accurately and sets the down position of the tool to the table's level, thus guaranteeing a flawless cut.

### Benefits

- Easy tool change
- Automatic depth measuring
- Flawless cutting
- Less operator intervention
- Saving valuable time

### Video:

[www.Summa.com/video/ADC](http://www.Summa.com/video/ADC)



Drag Module



# TECHNICAL SPECIFICATIONS

Model	F1612	F1432	F1832
<b>Dimensions</b>	247 x 220 x 110 cm	230 x 422 x 122 cm	279 x 422 x 122 cm
<b>Media Width</b>	Up to 165 cm	Up to 134 cm	Up to 190 cm
<b>Working Area</b>	160 x 120 cm	129 x 305 cm	184 x 320 cm
<b>Vacuum</b>	1.3 kW (50Hz) / 1.75 kW (60Hz)	2.2 kW (50Hz) / 2.55 kW (60Hz)	2 x 2.2 kW (50Hz) / 2 x 2.55 kW (60Hz)
<b>Vacuum Zones</b>	Variable over width of machine	6 zones (2 rows x 3 columns)	8 zones (2 rows x 4 columns)
<b>Requirements</b>	Standard: 3 x 400V + N, 50Hz, max 20A Or: 3 x 208V + N, 60Hz, max 30A Or: 3 x 230V, 50Hz, max 20A	Standard: 3 x 400V + N, 50Hz, max 30A Or: 3 x 208V + N, 60Hz, max 30A Or: 3 x 230V, 50Hz, max 30A	Standard: 3 x 400V + N, 50Hz, max 30A Or: 3 x 208V + N, 60Hz, max 30A Or: 3 x 230V, 50Hz, max 30A

Model	F3220	F3232	All standard solutions incl.
<b>Dimensions</b>	422 x 313 x 122 cm	422 x 422 x 122 cm	<ul style="list-style-type: none"> <li>• F Series Flatbed System</li> <li>• Conveyor System</li> <li>• Pneumatic Media Clamps</li> <li>• Roll Support</li> <li>• Camera System</li> <li>• Axis Control Software</li> <li>• Drag Module</li> <li>• ADC Right</li> <li>• ADC Left</li> <li>• GoProduce software</li> <li>• Speed: up to 1000 mm/sec</li> <li>• Acceleration: Up to 1G</li> </ul>
<b>Media Width</b>	Up to 332 cm	Up to 332 cm	
<b>Working Area</b>	327 x 210 cm	327 x 320 cm	
<b>Vacuum</b>	4.0 kW (50Hz) / 4.6 kW (60Hz)	2 x 2.2 kW (50Hz) / 2 x 2.55 kW (60Hz)	
<b>Vacuum Zones</b>	7 zones (1 row x 7 columns)	14 zones (2 rows x 7 columns)	
<b>Requirements</b>	Standard: 3 x 400V + N, 50Hz, max 30A Or: 3 x 208V + N, 60Hz, max 30A Or: 3 x 230V, 50Hz, max 30A	Standard: 3 x 400V + N, 50Hz, max 30A Or: 3 x 208V + N, 60Hz, max 30A Or: 3 x 230V, 50Hz, max 30A	



# F SERIES™

---



## Professional flatbed finishing systems



Jugoslovenska 2, 11250 Beograd  
Tel: +381 11 6581274, 6581275  
[www.sitotehnika.net](http://www.sitotehnika.net)  
[office@sitotehnika.net](mailto:office@sitotehnika.net)

Pratite nas:    



Aerodromska 17, 71000 Sarajevo, tel: +387 33 719095, 66 002600, e-mail: [sasastgraf@gmail.com](mailto:sasastgraf@gmail.com)  
Pilanska bb, 78000 Banja Luka, tel: +387 51 305280, 66 002400, e-mail: [stgrafbl@gmail.com](mailto:stgrafbl@gmail.com)  
Lagja Kalabria pn, 10000 Priština, tel: +383 38 602080, 45 600641, e-mail: [info@stgraf-ks.com](mailto:info@stgraf-ks.com)  
Bulevar Boris Trajkovski 112, 1000 Skoplje, tel: +389 78 290996, e-mail: [ace@sitotehnika.net](mailto:ace@sitotehnika.net)

Copyright 2020© Summa nv. Marketing Communications. Summa nv believes that all illustrations and specifications contained in this catalogue are correct at the time of publication. Summa nv reserves the right to make changes at any time, without notice. RevEN21.01 / All rights reserved

