

Ink set

One way (One ink mounting)				Hybrid (Two types ink mounting)			
1	Direct sublimation	Sb420 (Bl, M, Y, K, Lbl, Lm)	4	Reactive dye	Rc400 (C, M, Y, K, Bl, R, Or, Lk)	1	Dye sublimation (transfer):Sb411 (Bl, M, Y, K) / Textile pigment: TP400 (C, M, Y, K)
2	Disperse dye	DD400 (C, M, Y, K, R, Gray, Violet, Pink)	5	Reactive dye	Rc500 (C, M, Y, K, Bl, R, Or, Lk)	2	Direct sublimation:Sb420 (Bl, M, Y, K) / Textile pigment : TP400 (C, M, Y, K)
3	Textile pigment	TP400 (C, M, Y, K, Bl, R, Lk)	6	Acid Reactive dye	Ac400 (C, M, Y, K, Bl, R, Or, Lk)	3	Dye sublimation (transfer):Sb411 (Bl, M, Y, K) / Direct sublimation:Sb420 (Bl, M, Y, K)

One way : Direct sublimation (Sb420) can be printed with 4 or 6 colors and Textile pigment (TP400) with 4 or 7 colors. The other ink types can be printed with 8 colors.
Hybrid : Possible to print with 4 colors per ink type. *The combination of Direct sublimation (Sb420) + Dye sublimation (transfer) (Sb411) will be available at a later time.

Specifications

Item	Tx300P-1800 MkII
Printhead	On-demand piezo head (4 printhead in-line)
Print resolution (Depends on ink type)	360 dpi, 540 dpi, 720 dpi, 1,080 dpi, 1,440 dpi
Max. print width	1,920 mm (Textile) 1,940 mm (Paper)
Max. media width	1,920 mm (Textile) 1,950 mm (Paper)
Ink	Type/Color
	4/6/7/8c (*)
	Direct sublimation : Sb420 (Bl, M, Y, K, Lbl, Lm)
	Disperse dye : DD400 (C, M, Y, K, R, Violet, Pink, Gray)
	Textile pigment : TP400 (C, M, Y, K, R, Bl, Lk)
	Reactive dye : Rc400/500 (C, M, Y, K, Lk, R, Bl, Or)
Ink	Package size
	2L Ink pack
	Media thickness
	1.0 mm or less
	Media roll weight
	40 kg or less
Media type	Natural fiber (Cotton, Silk, Hemp), Chemical fiber (Polyester, Nylon) *Excluding elastic media Paper
Certifications	VCCI class A, FCC class A, ETL UL 60950-1 ETL CE Marking (EMC, Low voltage, Machinery directive, and RoHS), CB, REACH
Interface	USB 2.0 Hi-speed / Ethernet 1000BASE-T
Power	Single-phase AC100 to 120V / AC200 to 240V 50/60Hz ± 1Hz
Power consumption	(AC100V) 1,440W×1, (AC200V) 1,920W×1
Operation environment	Temperature: 20 - 30 degC, Humidity: 35 - 65% Rh (Non-condensation)
Outer sizes (WxDxH)	3,200 × 965 × 1,857 mm (126.0 × 38.0 × 73.2 in)
Weight	260 kg (573.2 lb)

* The color number depends on the ink type and with/without Hybrid. In the case of Hybrid, four colors are applied for each ink type.

Options

Item	Code	Remark
Mist catch unit	OPT-J0396	
Small relay box	OPT-J0370	Interlock controller between a main unit and an external heater
Relay box2	OPT-J0407	For turning on/off of the media drying heater by interlocking with printing operation
Slip sheet holder unit	OPT-J0405	Holder unit using for prevention of ink set-off
1 inch holder unit	OPT-J0399	Feeder unit for 1 inch-core media

Software

Either TxLink4 Lite or RasterLink6Plus is bundled under the selection at the time of your purchasing.

Professional RIP software with new features and more advanced for textile printing

TxLink4TM

Lite

- ◆ Color replacement function for Raster / vector data and CMYK / RGB images
- ◆ The "16 bit rendering" for super fine color gradation
- ◆ The "Parallel RIP" and the "Load balancing" for high work efficiency



Mimaki original RIP software which is highly functional and easier to operate.

RasterLink6^{PLUS}

- ◆ Intuitive and easy-to-understand operability "Icon display for quick recognition"
- ◆ Time saving by "registering favorites" operation setting

Representing faithfully the PDF data with transparent effect

- ◆ PDF data image with transparent effect is faithfully printable as the original.

●Some of sample images in this brochure are simulated. ●Specifications, designs and dimensions stated in this brochure may be subject to change without notice (for technical improvements, etc). ●All product and company names in this brochure are trademarks or registered of the respective companies. ●The printhead ejects extremely fine dots for printing, and therefore printed colors may vary after replacing the printheads. ●When using multiple printer units, printed colors would be different slightly because there is a slight difference among those units. ●Depending on image files used for printing, the print quality would be affected when printing in a low-resolution mode with the lowest number of passes. ●The specifications described in this catalogue are as of November 2019.



Jugoslovenska 2, 11250 Beograd
Tel: +381 11 6581274, 6581275
www.sitotehnika.net
office@sitotehnika.net



Aerodromska 17, 71000 Sarajevo, tel: +387 33 719095, 66 002600, e-mail: sasastgraf@gmail.com
Pilanska bb, 78000 Banja Luka, tel: +387 51 305280, 66 002400, e-mail: stgrafbl@gmail.com
Lagja Kalabria pn, 10000 Priština, tel: +383 38 602080, 45 600641, e-mail: info@stgraf-ks.com
Bulevar Boris Trajkovski 112, 1000 Skopje, tel: +389 78 290996, e-mail: ace@sitotehnika.net

Pratite nas:



For
TEXTILES &
APPAREL

Brand-new Hybrid Digital Textile Printer

Mimaki®

Tx300P-1800 MkII



Ultimate Advantage

Both textile and paper printing is available with a single printer unit.



Brand-new Hybrid Digital Textile Printer

Tx300P-1800 MkII

Ultimate Printer playing two roles in one, available for both textile and paper

Tx300P-1800 from Mimaki splendidly reproduces rich color gradation and delicate sophisticated lines in textile printing. In Tx300P-1800 MkII, these capabilities have been taken to a new level, and long-awaited print on paper is now available with the "hybrid ink capability" which is another unique feature of this series.

As Dye sublimation ink (transfer) for printing on transfer paper has been added, you can now select from 3 types of ink sets; "Dye sublimation ink (transfer) + Textile pigment ink", "Dye sublimation ink (transfer) + Direct sublimation ink", "Direct sublimation ink + Textile pigment ink".^{*1,*2}

Enabling print on paper will expand the possibilities of new materials and applications drastically.

^{*1:} It is possible to load only one ink as with conventional models.

^{*2:} The combination of "Dye sublimation ink (transfer) + Direct sublimation ink" is to be supported later.



(The image shows a condition of print on paper.)

Hybrid

Hybrid ink set
(Two types of inks can be loaded at the same time.)



Sports apparel



Fashion apparel



Wall paper



Poster



Soft sign

- Able to manage to use **two types of ink** properly in response to your needs.
- Available to print on **both paper and textile** with a single printer unit.
- Possible to create printed fabric simply **with your existing processing equipment** only such as heat press etc.

One way and Hybrid are available.

One way

One way ink set (1 type of ink is loaded)



Apparel



Silk product



Fashion articles



Home fabrics



Car seat



Soft signage

- **Versatile use and ink type** for direct printing in accordance with material and purpose.
- **Four colors for high productivity**
Six/seven/eight colors for **superior expressiveness**.

Rich variety of ink types in One way for any printing application

Ink type	Color	Feature	Media(Textile)	Pre-treatment	Post-treatment	Application example
Direct sublimation Sb420	Bl, M, Y, K, Lb, Lm	Ink for direct sublimation print. It allows to print directly onto textile. ^{*1}	Polyester	Necessary	Heating / Washing	Soft signage / Sports apparel / Fashion apparel
Disperse dye DD400	C, M, Y, K, R, Violet, Pink, Gray	High color fastness is achieved by dispersing dye particles in water with dispersant and heating at a high temperature to fix the color.	Polyester / Nylon	Necessary	Steaming (heat + water) / Pressure treatment / Washing	Industrial textile / Home fabrics / High-class apparel
Textile pigment TP400	C, M, Y, K, R, Bl, Lk	Ink containing binder (bonding agent) to fix the pigment to fibers by applying heat. As this ink requires only the heat-fixing process after print, the post-process equipment can be simplified. ^{*1,2}	Cotton / Hemp / Silk / Other textiles ^{*3}		Heating	Apparel / Home fabrics / Fashion articles
Reactive dye Rc400, Rc500	C, M, Y, K, Lk, R, Bl, Or	It provides excellent color development and color reproducibility. Combination of dyestuff molecules and fibers delivers superior water resistance, scratch resistance, and light resistance.	Cotton / Hemp / Silk / Rayon	Necessary	Steaming (heat + water) / Washing	Apparel / Home fabrics
Acid dye Ac400	C, M, Y, K, Lk, R, Bl, Or	Property of acid is utilized to vividly dye animal-based materials such as wool, leather and silk as well as nylon and other protein-based man-made fibers.	Wool / Leather / Silk / Nylon	Necessary	Steaming (heat + water) / Washing	Apparel / Home fabrics

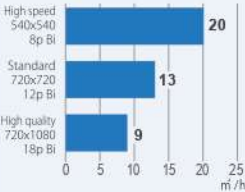
^{*1:} Post-processing such as steaming and washing may be necessary depending on the print conditions.

^{*2:} Beautiful results can be achieved even in high-density color print by performing pre-processing.

^{*3:} It is available to print other textiles than cotton / hemp with pre-treatment. Be sure to make a test print in advance.

Print speed

Reactive dye Rc400/Rc500



Only 8 color ink set is available for reactive dye Rc400/Rc500.

Versatile ink combination in Hybrid

	Ink type	Color	Feature	Media(Textile/Paper)	Pre-treatment	Post-treatment	Application example
Ink set 1	Dye sublimation (transfer) ink Sb411	Bl, M, Y, K	Transfers the printed transfer paper in close contact with the media without any pre-treatment. Excellent color development and color reproducibility.	After printing on transfer paper, transferring to polyester		Heating	Soft sign / Sports apparel / Fashion apparel
	Textile pigment ink TP400	C, M, Y, K	Ink containing binder (bonding agent) to fix the pigment to fibers by applying heat. As this ink requires only the heat-fixing process after print, the post-process equipment can be simplified. ^{*1,2}	Direct printing on cotton, hemp, others (textile ^{*3}) and paper		Heating	Apparel / Home fabrics / Fashion articles / Wall paper / Poster
Ink set 2	Direct sublimation ink Sb420	Bl, M, Y, K	Ink for direct sublimation print. It allows to print directly onto textile. ^{*1}	Direct printing on polyester	Necessary	Heating / Washing	Soft sign / Sports apparel / Fashion apparel
	Textile pigment ink TP400	C, M, Y, K	Ink containing binder (bonding agent) to fix the pigment to fibers by applying heat. As this ink requires only the heat-fixing process after print, the post-process equipment can be simplified. ^{*1,2}	Direct printing on cotton, hemp, others (textile ^{*3}) and paper		Heating	Apparel / Home fabrics / Fashion articles / Wall paper / Poster
Ink set 3 ^{*4}	Dye sublimation (transfer) ink Sb411	Bl, M, Y, K	Transfers the printed transfer paper in close contact with the media without any pre-treatment. Excellent color development and color reproducibility.	After printing on transfer paper, transferring to polyester		Heating	Soft sign / Sports apparel / Fashion apparel
	Direct sublimation ink Sb420	Bl, M, Y, K	Ink for direct sublimation print. It allows to print directly onto textile. ^{*1}	Direct printing on polyester	Necessary	Heating / Washing	Soft sign / Sports apparel / Fashion apparel

^{*1:} Post-processing such as steaming and washing may be necessary depending on the print conditions. ^{*2:} Beautiful results can be achieved even in high-density color print by performing pre-processing.

^{*3:} It is available to print other textiles than cotton / hemp with pre-treatment. Be sure to make a test print in advance

^{*4:} The ink set 3 is to be supported later.

Mimaki's print technologies

Mimaki Advanced Pass System 4 (MAPS4) reduces banding

Mimaki's unique anti-banding technique MAPS4^{*} is an advanced version of MAPS3. To prevent banding, swath boundaries are overprinted, whereas boundaries prone to banding are printed with fewer ink droplets.

^{*}MAPS4: Mimaki Advanced Pass System 4

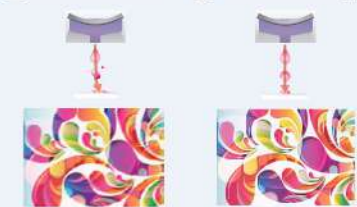
■ MAPS : ON ■ MAPS : OFF



Superior inkjet technology

Mimaki's superior inkjet technology accurately places the ink droplets without losing their perfect circularity. This ensures that texts, lines, and edges are clearly and sharply printed.

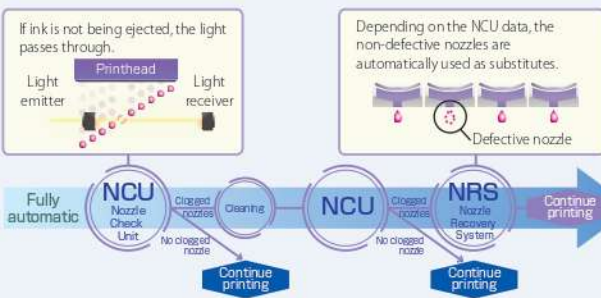
■ No waveform control ■ Waveform control applied



Uninterrupted printing solutions

Continuous operation support pack minimizes the downtime

The Nozzle Check Unit (NCU) detects nonfunctioning nozzles and automatically cleans them. If the nozzles fail to operate after cleaning, defective nozzles are replaced by non-defective ones until a technician arrives, and printing is continued. This feature enables uninterrupted print operations and continuous productivity.

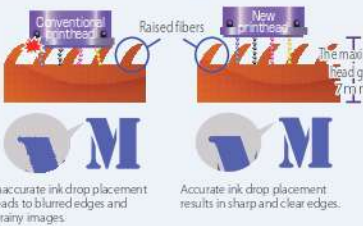


Ultimate design for usability ensuring high-quality production

New printhead allows printing on various types of textile

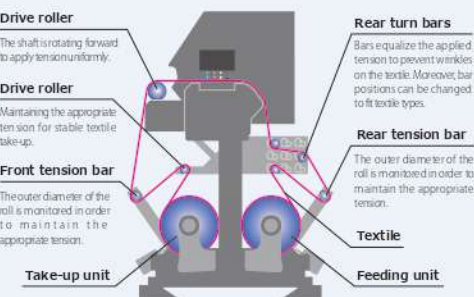
While printing on raised fiber surface textiles, a high head gap setting is required to prevent contact between the printhead and the nap. In conventional modes, such gap conditions reduce the accuracy of ink droplet placement. However, the new printhead ejects ink droplets at a high speed to maintain the straightness of the droplet direction, and accordingly accurate ink droplet placement is achieved. This enables high-quality printing on napped textiles. (Recommended head gap : 3mm)

■ Conventional printhead ■ New printhead



Reliable textile feeding mechanism ensures stable printing

Tx300P-1800 MkII can detect automatically changes in tension caused by media roll diameter varying to adjust the tension with a tension bar. Since the tension of media is kept constant, the textile feeding is stable even in high-speed printing and long-length printing to contribute in high-quality printing.



Standard features of MBIS3 and UISS deliver continuous printing for a long time.

Large two liter ink packs are installed in MBIS3^{*1} for long-time continuous printing to reduce operating cost. As soon as one ink container is empty, UISS^{*2} automatically provides ink from another container without any interruption to printing.

These systems supply ink continuously to ensure unattended continuous printing.

^{*1} MBIS3: Mimaki Bulk Ink System3
^{*2} UISS: Uninterrupted Ink Supply System
^{*3} UISS functions with 4-color operation.



Ethernet supported! - Establish free and efficient work environment -

More free and efficient work-site environment can be put in place, by editing data using any PC in your office, then sending print data directly to a printer in your work operation site, for example.

