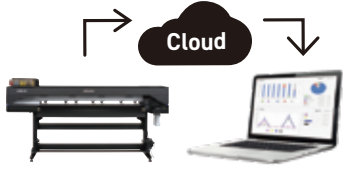


Cloud service that supports business efficiency and peace of mind

Mimaki Cloud Technology



PICT automatically compiles operating status, ink usage, and even error details. It enables accurate monitoring of printers from remote locations, supporting efficient business operations.

- ✓ Production control
- ✓ Preparing to refill ink
- ✓ Planning maintenance time etc...

Software to support operations from design creation to output (included as standard)

Supporting the beauty of prints and operability

Genuine RIP Software



Drawing out more cutting possibilities

Plug-in cutting software for Illustrator/CorelDRAW



Easier Design Creation

Design software



For SignGraphics



Eco-Solvent Inkjet Printer

200 series

CJV200-160 / -130 / -75  
JV200-160 / -130

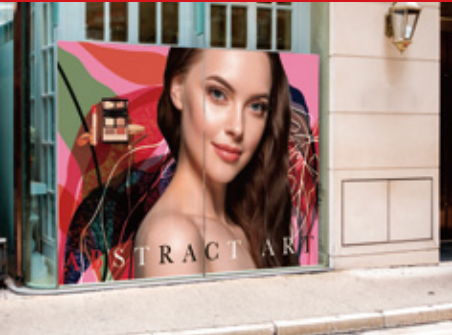
# In Pursuit of High Image Quality and Ease of Use for Everyone








Printer  
JV200



Printer & Cutter  
CJV200



## Specifications

■ Specifications		CJV200 -160	CJV200 -130	CJV200 -75	JV200 -160	JV200 -130
						
Item						
Print head		On-demand piezo head				
Print resolution		Y: 600, 900, 1,200dpi X: 600, 1,200dpi				
Head gap		2levels by manual (1.5mm / 2.0mm )				
Ink	Type	SS21、SS22、BS4				
	Color	4color(C,M,Y,K) 8color(C,M,Y,K,Lc,Lm,Lk,Or)				
	Capacity	SS22:440ml ink cartridge / 1L ink pack SS21:440ml ink cartridge / 2L ink pack BS4:600ml ink pack / 2L ink pack				
Ink circulation		Yes				
Max. media width		1,620mm(63.8in)	1,371mm(54in)	810mm(31.9in)	1,620mm(63.8in)	1,371mm(54in)
Max. Printable width		1,610mm(63.4in)	1,361mm(53.5in)	800mm(31.5in)	1,610mm(63.4in)	1,361mm(53.5in)
Media roll outer diameter		φ180mm or less (7.1in)				
Media roll weight		25kg (55.1 lb.) or less*1				
Media roll inside diameter		2 / 3 inch				
Cut function	Cut speed / acceleration	Speed:Max.300 mm/s Acceleration:Max. 0.5G			-	
	Cut pressure	10-450gf			-	
	Cutter response times	10 times / sec			-	
	Repeatability	±0.2mm			-	
Interface		Ethernet 1000 BASE-T(Recommended) / USB 2.0 Hi-speed				
Power		AC(100-120V/200-240V±10%)x2 50/60Hz±1Hz				
Power consumption		Max.1,320W x2 / 4.5W or less (Sleep mode)				
Operational environment	Temperature	20 - 30 degC (68-86 degF)				
	Humidity	35 - 65% Rh (Non condensing)				
	Guaranteed accuracy temperature	20 - 25 degC (68 - 77 degF)				
	Dust level	Equivalent to general office				
Dimensions (WxDxH)		2,770mm×748mm×1,370mm (109x29x54in)	2,520mm×748mm×1,370mm (99x29x54in)	1,960mm×748mm×1,370mm (77x29x54in)	2,770mm×748mm×1,370mm (109x29x54in)	2,520mm×748mm×1,370mm (99x29x54in)
Weight		140kg(309lb)	130kg(287lb)	105kg(231lb)	140kg(309lb)	130kg(287lb)

## Options

Item No.	Item	Image
OPT-J0422	NCU OPT	
OPT-J0364	MBIS3 bulk supply unit	
OPT-J0576	MBIS BKT OPT	
OPT-J0502*1	Level foot OPT	
OPT-J0578	160 cover OPT	
OPT-J0579	130 cover OPT	
OPT-J0580	75 cover OPT	
OPT-J0361	ECO CASE4	

\*1:With the OPT-J0502 Level Foot attached, supports media up to 45kg(99.2lb).

•Some examples shown in this catalog are artificial renderings. •Specifications, designs and dimensions shown in this catalog may be subject to change without notice for technical improvements. •The corporate and merchandise names in this catalog are the trademarks or registered trademarks of the respective corporations. •Inkjet printers use extremely fine dots, so colors may vary slightly after replacement of print heads. •Also note that when using multiple printer units, colors could vary slightly from one unit to another due to slight individual differences. •Please note that descriptions and data in this catalog are as of April 2025.

**Mimaki**  
mimaki.com

**MIMAKI ENGINEERING CO., LTD.**  
2182-3 Shigeno-Otsu, Tomi-city, Nagano 389-0512, Japan  
TEL: +81-268-64-2281

Mimaki Global Network

USA MIMAKI USA, INC.  
Brazil MIMAKI BRASIL COMERCIO E IMPORTACAO LTDA  
India MIMAKI INDIA PRIVATE LIMITED  
Taiwan MIMAKI ENGINEERING (TAIWAN) CO.,LTD.  
Singapore MIMAKI SINGAPORE PTE. LTD.  
Vietnam MIMAKI VIETNAM CO., LTD.

Europe MIMAKI EUROPE B.V.  
Indonesia PT. MIMAKI INDONESIA  
Australia MIMAKI AUSTRALIA PTY. LTD.  
China SHANGHAI MIMAKI TRADING CO.,LTD.  
Thailand MIMAKI (THAILAND) CO.,LTD.





## Overwhelming Beauty

The CJV200 is equipped with a single print head of "330 Engine" in Mimaki's flagship printer.

The technology of precise control of a minimum 3pl ink drop and the print head that delivers high-density prints, even at high speeds, resulting in overwhelmingly beautiful printing.



Practical speed **17.0m<sup>2</sup>/h**



## Easy for Everyone

### Simple Design

Single Print Head  
- Simple Maintenance

The single print head system reduces cleaning and adjustment time. Its straightforward design enables quick and easy operation.

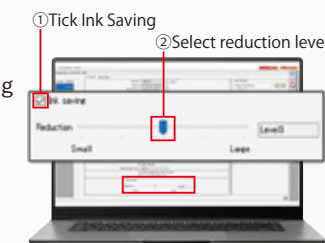


Wide-Opening Cover for Easy Maintenance

Upward-Facing Control Panel for Easy Operation

### Reduce Ink Consumption with Just 2 Clicks Ink Saving Function

Anyone can easily lower ink consumption without needing technical expertise. This feature works with all substrates and profiles.



### Easy and Precise Automatic Set Up

Automatically performs necessary adjustment at the media setup to ensure optimal image quality at all times.  
(DAS | Dot Adjustment System )



## Reliable Productivity

Even During Peak Season

High Quality 1200x1200 6pass   12pass	<b>10.1m<sup>2</sup>/h</b> (108.7sqft/h)	<b>5.0m<sup>2</sup>/h</b> (53.8sqft/h)
Quality 900x1200 6pass   12pass	<b>12.5m<sup>2</sup>/h</b> (134.5sqft/h)	<b>6.0m<sup>2</sup>/h</b> (64.6sqft/h)
Standard 600x1200 6pass   12pass	<b>17.0m<sup>2</sup>/h</b> (183.0sqft/h)	<b>8.5m<sup>2</sup>/h</b> (91.5sqft/h)
High Speed 600x1200 4pass   8pass	<b>22.0m<sup>2</sup>/h</b> (236.8sqft/h)	<b>11.0m<sup>2</sup>/h</b> (118.4sqft/h)

■ 4 Color ■ 8 Color

Print Speeds of 200series

Adjustable in 5 steps from level-1 to level-5



Ink Saving **OFF**  
(Default)



Ink Saving **Level 3**  
(Approx. 30% reduction)



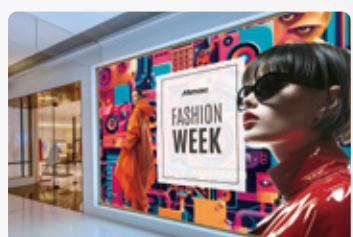
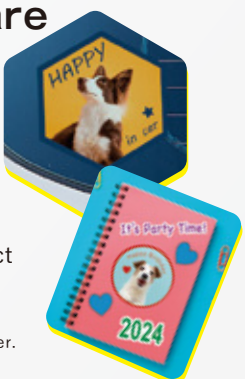
Ink Saving **Level 5**  
(Approx. 50% reduction)

### Simple Design Software

**Simple Create**

Simple Create is the original software for designing labels, stickers, and wobblers without the need for DTP software. Combined with RasterLink7, it enables direct output of design data to the printer.

\*RasterLink7 must be installed on the same computer.





# In Pursuit of High Image Quality and Ease of Use for Everyone



Printer & Cutter  
**CJV200-160B**



Printer  
**JV200-160B**

## Overwhelming Beauty

The CJV200 is equipped with a single "330 Engine" print head. This is the same head used in Mimaki's flagship printer.



The 330 print head precisely controls ink droplets as small as 3pl and enables high-density ejection even at high speeds, delivering overwhelming beauty.

## Reliable Productivity even during Peak Season



## Easy for Everyone



### Simple Design



#### Single Print Head - Simple Maintenance

A single printhead system reduces cleaning and automatic media adjustment time.\* Its simple design enables quick and easy operation.

\*Comparison with existing entry-level machines

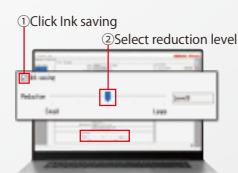


#### Wide-Opening Cover for Easy Maintenance

#### Upward-Facing Control Panel for Easy Operation

## Reduce Ink Consumption with Just 2 Clicks Ink Saving Function

Reduce ink consumption by up to 50% without compromising natural colors. No technical expertise needed—anyone can use it with ease.



Adjustable in 5 steps from level-1 to level-5



**Ink Saving OFF**  
(Default)



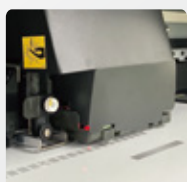
**Ink Saving Level 3**  
(Approx. 30% reduction)



**Ink Saving Level 5**  
(Approx. 50% reduction)

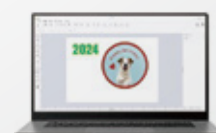
## Easy and Precise Automatic Set Up

Let the automatic adjustment function (DAS) handle media adjustments. Achieve optimal image quality effortlessly at any time.



## Simple Design Software

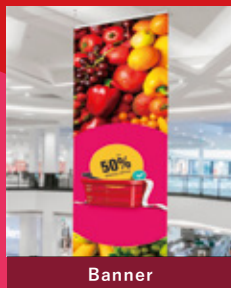
**Simple create**



The original design software, 'Simple Create,' is included. Even without professional DTP software experience, you can easily create labels, POP displays, stickers, and more.



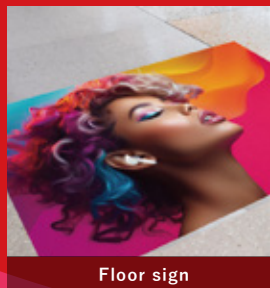
Car wraps



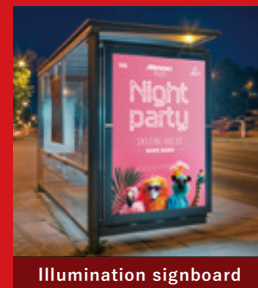
Banner



Sticker



Floor sign



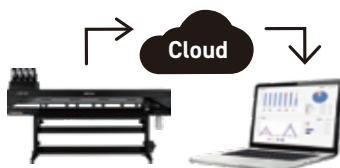
Illumination signboard

## Software Solutions

Cloud service that supports business efficiency and peace of mind

Mimaki Cloud Technology

**PICT**



PICT automatically compiles operating status, ink usage, and even error details. It enables accurate monitoring of printers from remote locations, supporting efficient business operations.

- ☒ Production control
- ☒ Preparing to refill ink
- ☒ Planning maintenance time etc...

Software to support operations from design creation to output (included as standard)

Supporting the beauty of prints and operability

Genuine RIP Software

**Raster Link 7**

Drawing out more cutting possibilities

Plug-in cutting software for Illustrator/CorelDRAW

**fine Cut/Coat 9**

Easier Design Creation

Design software

**Simple Create**

## Specifications

Item		CJV200-160B	JV200-160B
Print head		On-demand piezo head	
Print resolution		Y:600, 900, 1,200dpi X:600, 1,200dpi	
Head gap		2 levels by manual(1.5mm / 2.0mm)	
Ink	Type	Eco-solvent ink CS250	
	Color	4color(C,M,Y,K)	
	Capacity	1L bottle	
Max. media width		1,620mm(63.8in)	
Max. Printable width		1,610mm(63.4in)	
Media roll outer diameter		φ180mm or less(7.1in)	
Media roll weight		25kg(55.1lb) or less [45kg(99.2lb) or less with option*1]	
Media roll inside diameter		2 / 3inch	
Cut function	Cut speed / acceleration	Speed:Max. 300mm/s Acceleration:Max. 0.5G	-
	Cut pressure	10-450gf	-
	Cutter response times	10times / sec	-
	Repeatability	±0.2mm	-
Interface		Ethernet 1000 BASE-T(Recommended) / USB 2.0 Hi-speed	
Power		AC(100-120V/200-240V±10%)x2 50/60Hz±1Hz	
Power consumption		Max.1,320W x2 / 4.5W or less(Sleep mode)	
Operational environment	Temperature	20 - 30degC (68 - 86degF)	
	Humidity	35 - 65% Rh(Non condensing)	
	Guaranteed accuracy temperature	20 - 25degC(68 - 77degF)	
	Dust level	Equivalent to general office	
Dimensions (WxDxH)		2,770mm x 748mm x 1,403mm(109.1x29.4x55.2in)*2	
Weight		140kg(308.6lb)	

## Ink

Item	Color	Item No.	Remarks
CS250 GREENGUARD Gold certified ink	Cyan	CS250-C-BA	1L bottle
	Magenta	CS250-M-BA	
	Yellow	CS250-Y-BA	
	Black	CS250-K-BA	

## Options

Item No.	Item	Image
OPT-J0422	NCU OPT	
OPT-J0502*1	Level foot OPT	
OPT-J0578	160 cover OPT	

\*1 With the OPT-J0502 Level Foot attached, supports media up to 45kg(99.2lb).  
\*2 Body dimensions exclude ink bottles.

•Some examples shown in this catalog are artificial renderings. •Specifications, designs and dimensions shown in this catalog may be subject to change without notice for technical improvements. •The corporate and merchandise names in this catalog are the trademarks or registered trademarks of the respective corporations. •Inkjet printers use extremely fine dots, so colors may vary slightly after replacement of print heads. •Also note that when using multiple printer units, colors could vary slightly from one unit to another due to slight individual differences. •Please note that descriptions and data in this catalog are as of February 2025.



Jugoslovenska 2, 11250 Beograd  
Tel: +381 11 6581274, 6581275  
www.sitotehnika.net  
office@sitotehnika.net



Aerodromska 17, 71000 Sarajevo, tel: +387 33 719095, 66 002600  
Pilanska bb, 78000 Banja Luka, tel: +387 51 305280, 66 002400  
Lagja Kalabria pn, 10000 Priština, tel: +383 38 602080, 45 600641  
Pero Nakov 118-a, 1000 Skoplje, tel: +389 78 290996, 70 862248

